



SPARE PARTS EXPLODED VIEW
GAS-WALL BOILER ATM. BURNER
Model
CARES XC - HS XC

R8218623-03 - 17/01/2022

CARES XC - HS XC

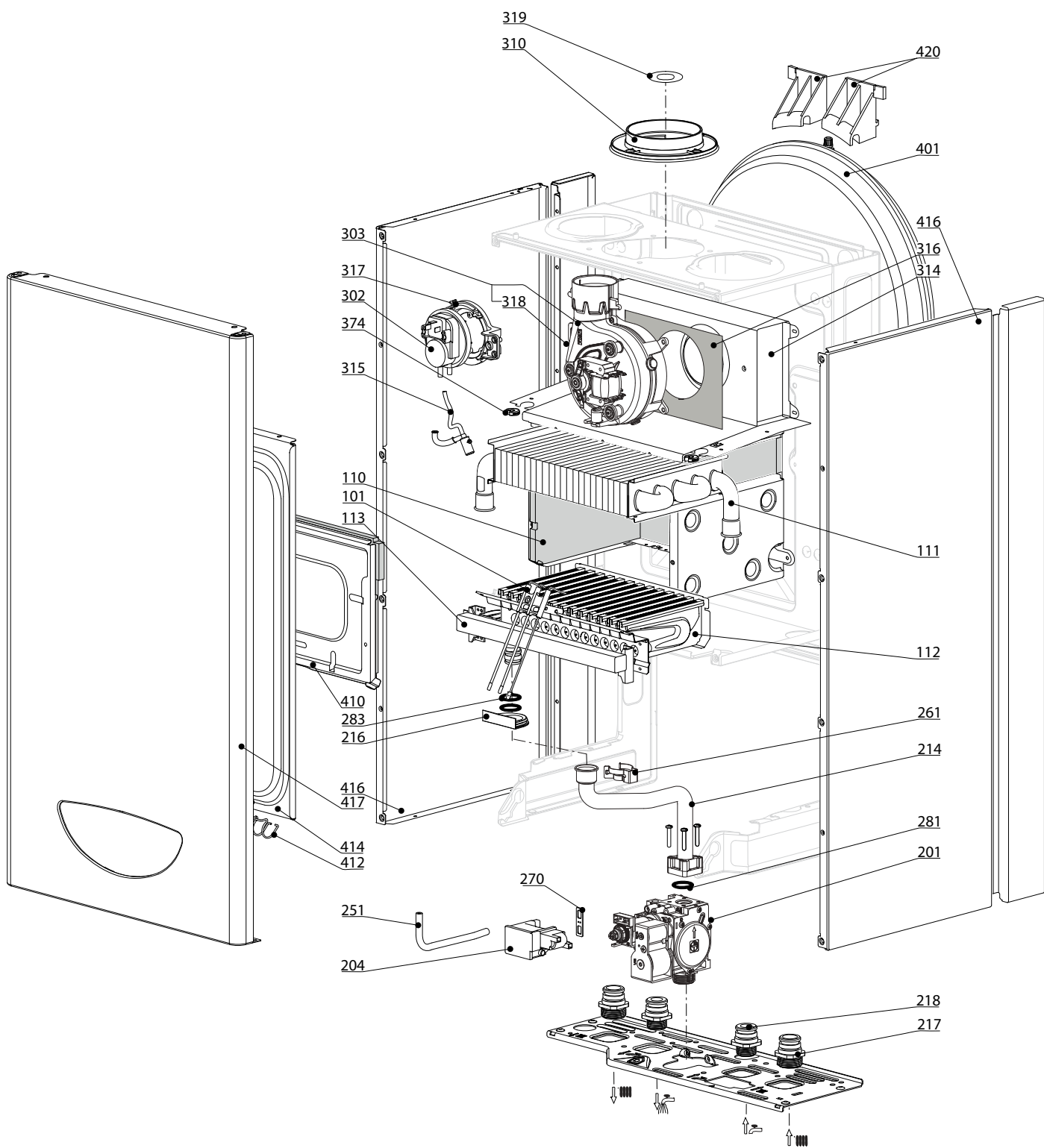
Gas-wall boiler atm. burner

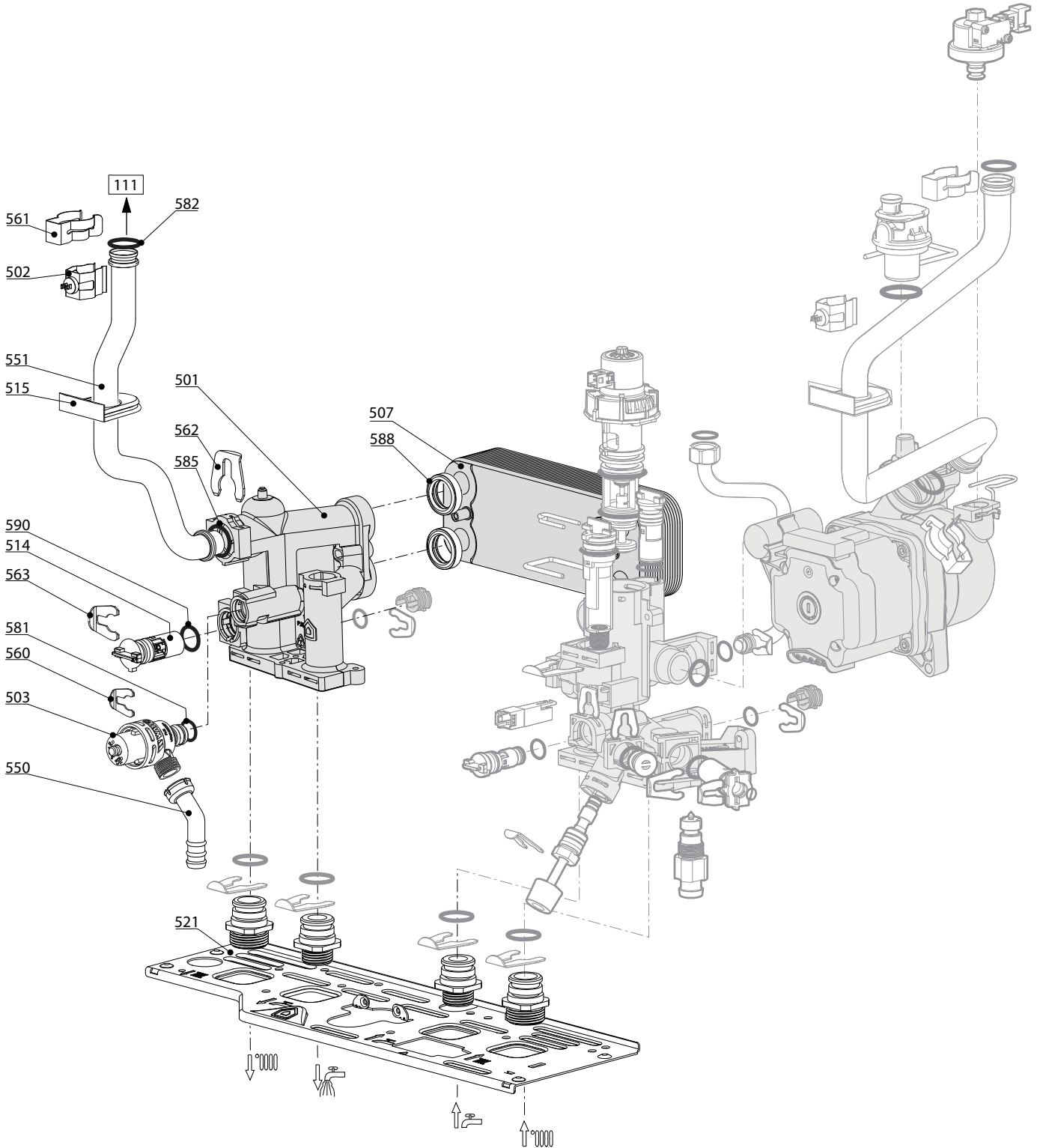
1	3301685	CARES XC 10 FF NG	02-2021	-
2	3301684	CARES XC 15 FF NG	02-2021	-
3	3301683	CARES XC 18 FF NG	02-2021	-
4	3301682	CARES XC 24 FF NG	02-2021	-
5	3301689	HS XC 10 FF NG	03-2021	-
6	3301688	HS XC 15 FF NG	03-2021	-
7	3301687	HS XC 18 FF NG	03-2021	-
8	3301686	HS XC 24 FF NG	03-2021	-
Col	Reference	Model type	Begin	End



100
200
300
400

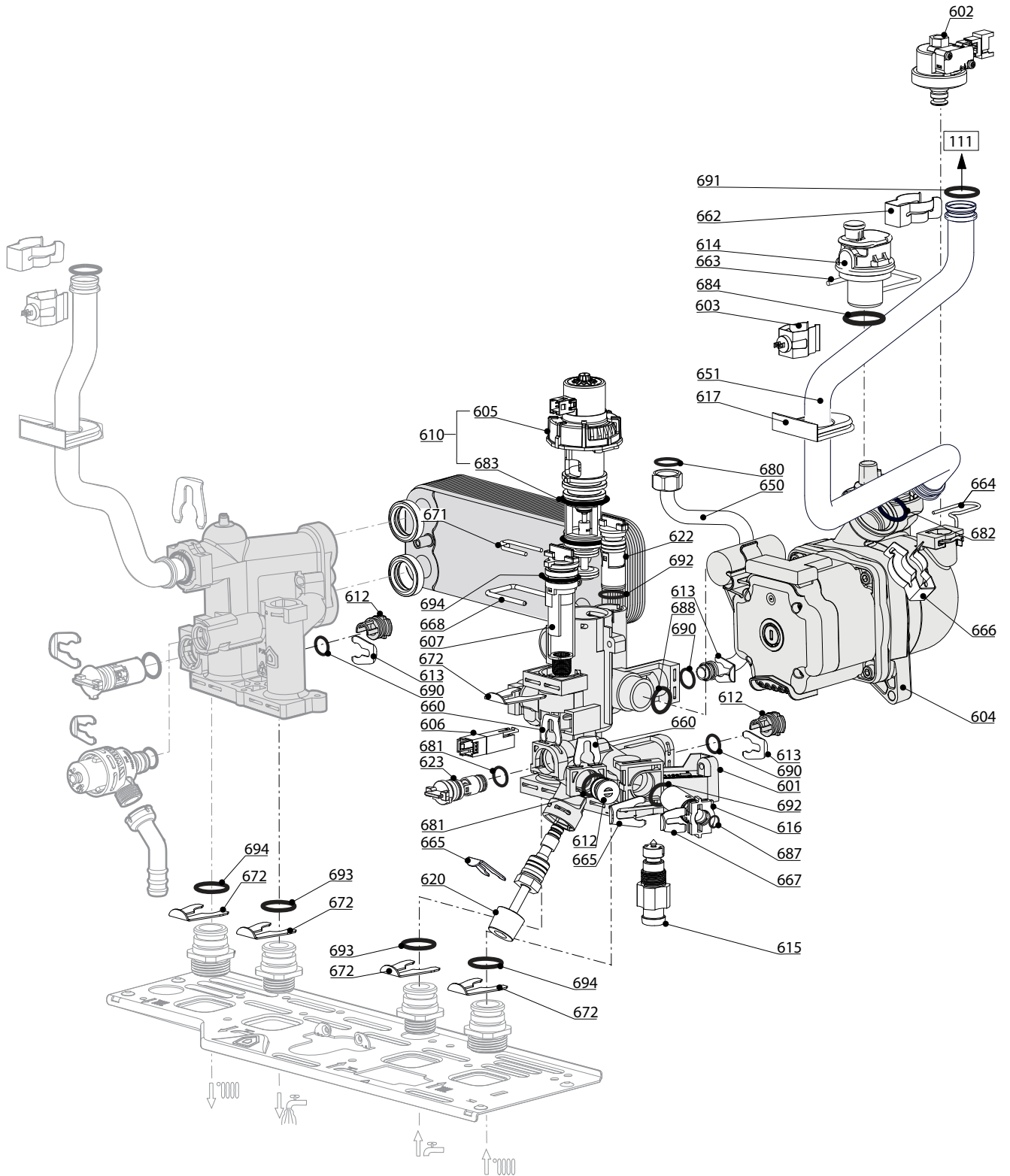
CARES XC - HS XC

Gas-wall boiler atm. burner

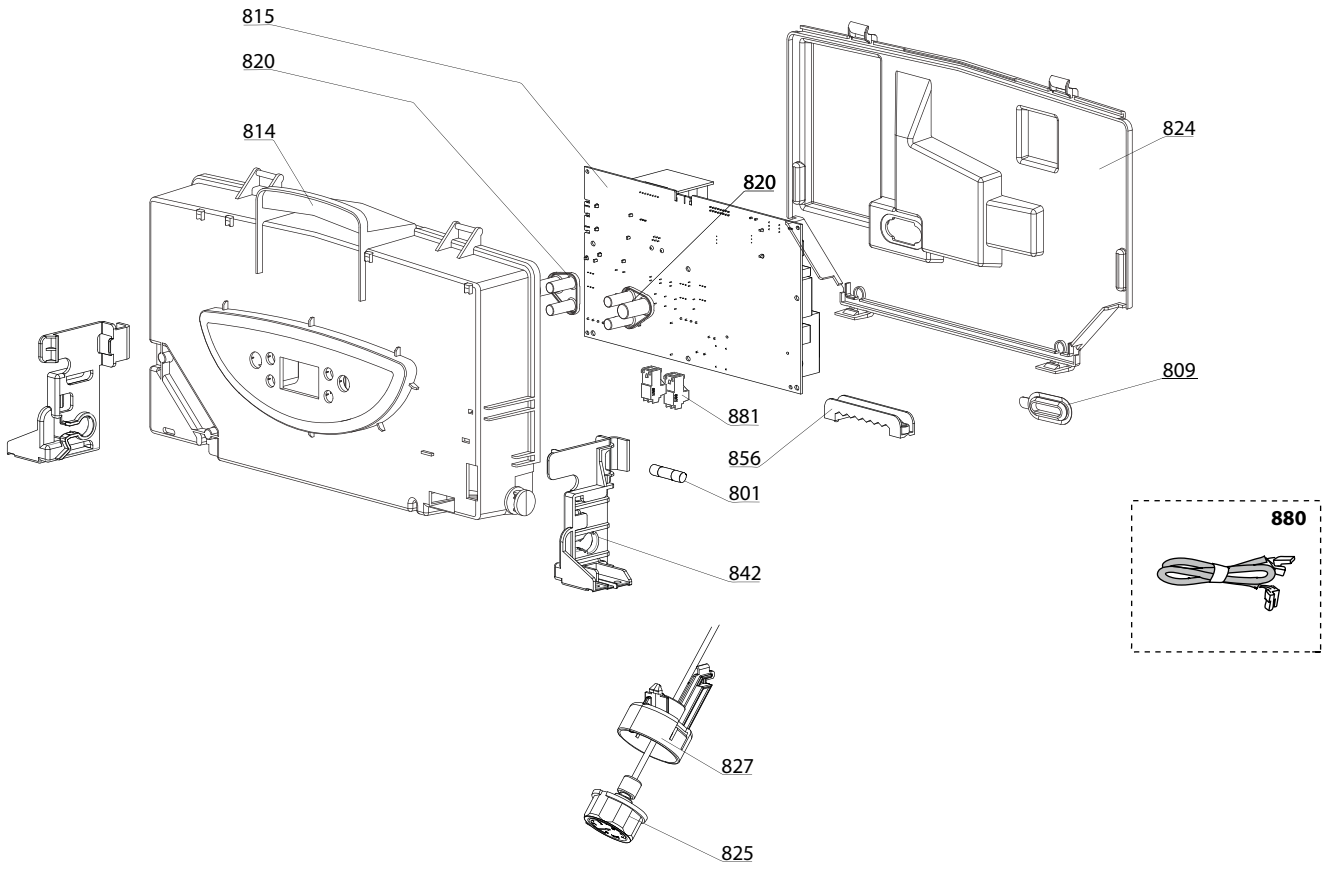




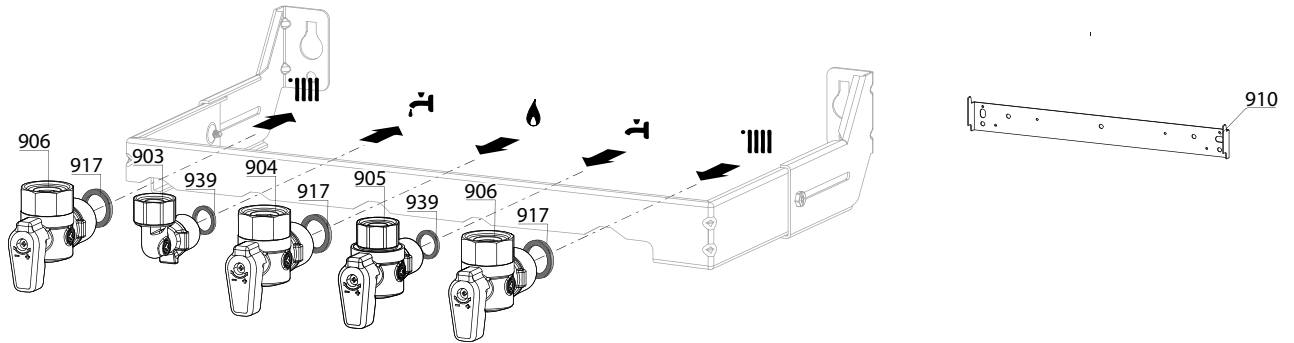
☉⇒	Description	Manf. Pt. N	Type																				
				1	2	3	4	5	6	7	8	9	10	11	12	13	14	15	16	17	18	From	to
0500	FLOW GROUP																						
0501	ГРУППА ПОДАЧИ	65117952		●	●	●	●	●	●	●	●												
0502	ДАТЧИК ТЕМПЕРАТУРЫ + КЛИПСА	990686-01		●	●	●	●	●	●	●	●												
0503	ПРЕДОХРАНИТЕЛЬНЫЙ КЛАПАН (3 БАРА)	61312668		●	●	●	●	●	●	●	●												
0507	ТЕПЛООБМЕННИК ГВС (16 ПЛАСТИН)	65104333		●	●	●	●	●	●	●	●												
0514	БАЙПАС	65114917		●	●	●	●	●	●	●	●												
0515	УПЛОТНЕНИЕ	60000808		●	●	●	●	●	●	●	●												
0521	ОСНОВАНИЕ ГИДРАВЛИЧЕСКОЙ ГРУППЫ	65115797		●	●	●	●	●	●	●	●												
0550	ПАТРУБОК ПРЕДОХРАНИТЕЛЬНОГО КЛАПАНА	60001955		●	●	●	●	●	●	●	●												
0551	ТРУБКА ПОДАЧИ ТЕПЛОНОСИТЕЛЯ (Cu)	65115915		●	●	●	●	●	●	●	●												
0560	КЛИПСА D:10	65114933		●	●	●	●	●	●	●	●												
0561	КЛИПСА	61307589		●	●	●	●	●	●	●	●												
0562	КЛИПСА D:18	65104259		●	●	●	●	●	●	●	●												
0563	КЛИПСА D:12	65114932		●	●	●	●	●	●	●	●												
0581	O-КОЛЬЦО 17.96X2.62	65104337		●	●	●	●	●	●	●	●												
0582	O-КОЛЬЦО 17.86X2.62	61308091		●	●	●	●	●	●	●	●												
0585	O-КОЛЬЦО 17.04X3.53	65104262		●	●	●	●	●	●	●	●												
0588	ПРОКЛАДКА ТЕПЛООБМЕННИКА	65114928		●	●	●	●	●	●	●	●												
0590	O-КОЛЬЦО 11.91X2.62	65114940		●	●	●	●	●	●	●	●												



800



900



5000

5001
 Transf. gaz
 Conv. gas
 Trsf. gas
 Transf. gas
 > G31
 (LPG - GPL)

5002
 Transf. gaz
 Conv. gas
 Trsf. gas
 Transf. gas
 > G20
 (NAT - MET)

LIST OF THE ABBREVIATIONS

HW	: Hot water.
CW	: Cold water.
C	: Ceramic resistance (normal heating).
Ca	: Ceramic resistance (accelerated heating)
TP	: Immersion heater.
1F	: With fittings.
2F	: Without fittings.
3F	: With fittings and another outlet connection.
AMI	: With mixing valve.
SMI	: Without mixing valve.
PUISS	: Power of th appliance.
PN	: Appliance with normal pression.
LP	: Appliance with low pression.
PV	: Appliance with variable power.
PF	: Appliance with fixed power.

IDENTIFICATION PLATE

SERIAL NUMBER

10 Characters :	04 05 125 011	Sequential number Manufacturing day Year of manufacture
11 Characters :	1 95 065004 - 31	Technical number of the appliance Sequential number Year of manufacture
Month of manufacture : from 1 to 9 → Jan. to Sep., O → Oct., N → Nov., D → Dec.		
19 Characters :	08 05 0013199 900640031	Product reference Sequential number
Year of manufacture Month of manufacture		
20 Characters :	3675007 XX 2 07 070 00315	Sequential number Manufacturing day Year of manufacture
Product reference Millenium of manufacture		
21 Characters :	3675007 XX 07 070 0000315	Sequential number Manufacturing day
Product reference Year of manufacture		